

Modul-6

Oleh : Kundang K . Juman

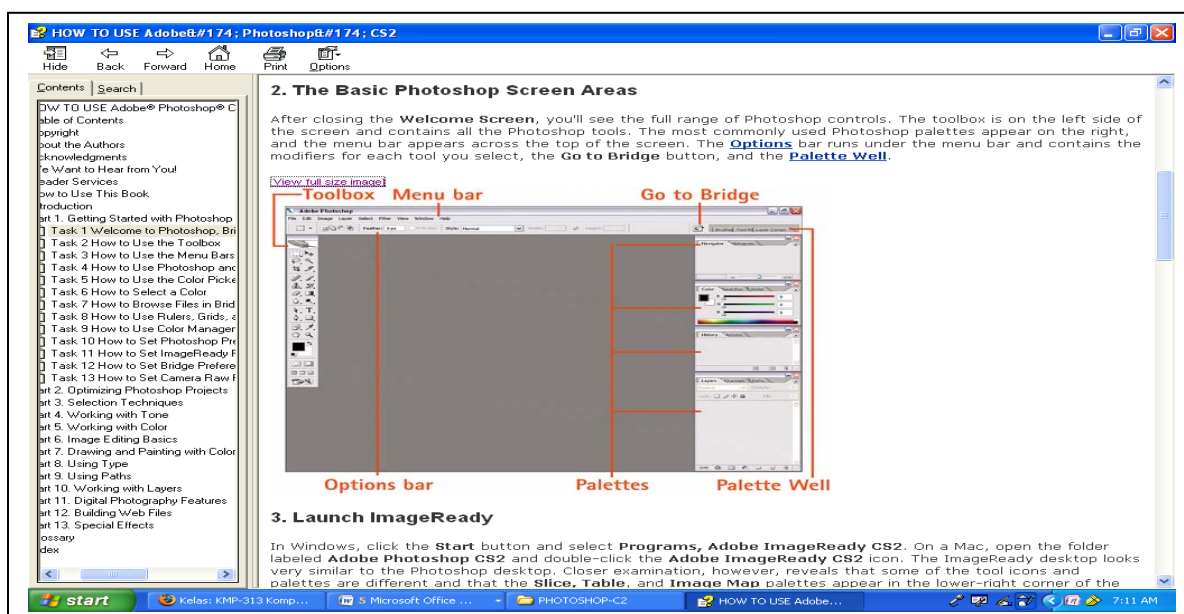
Pengenalan Adobe photoshop CS2

Tujuan : Agar Mahasiswa dapat menggunakan tools yang ada pada adobe photoshop

Tujuan :

4. The Basic Bridge Screen Areas

In Windows, click the Start button and select Programs, Adobe Bridge. On a Mac, open the Adobe Bridge folder and double-click the **Bridge** icon. If Photoshop is already open, click the Go to Bridge button located on the **Options** bar. Along the top are the menu commands. The large content area contains thumbnails of the images in the current folder; at the very bottom are the status information and display buttons.



Task 2 How to Use the Toolbox

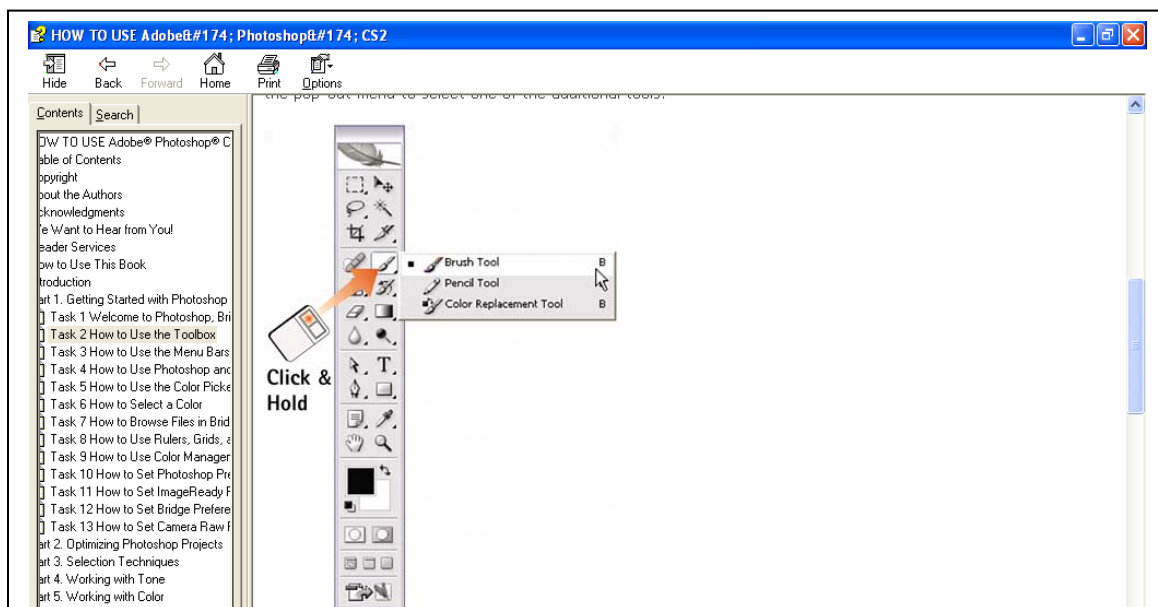
Each time you launch Photoshop or ImageReady, the toolbox appears on the screen, usually in the upper-left corner. In the process of editing an image, you will go to the toolbox frequently to select various selection, painting, and specialty tools. This task outlines what you'll find in the toolbox and how to access it.

1. Open the Photoshop Toolbox

The toolbox should appear automatically on the desktop, but it can be closed, which means you have to reopen it. To open the toolbox, select Window, Tools.



2. Select a Photoshop Tool



Task 2 How to Use the Toolbox

Each time you launch Photoshop or ImageReady, the toolbox appears on the screen, usually in the upper-left corner. In the process of editing an image, you will go to the toolbox frequently to select various selection, painting, and specialty tools. This task outlines what you'll find in the toolbox and how to access it.

1. Open the Photoshop Toolbox

The toolbox should appear automatically on the desktop, but it can be closed, which means you have to reopen it. To open the toolbox, select Window, Tools.

Task 3 How to Use the Menu Bars

The menu bars in Photoshop and ImageReady operate like the menu bars in any other application. Click the menu name so that the menu drops down; then click any option to select it. Select an option that has a solid right-facing arrowhead, and a submenu pops out. Select an option that has a three-dot ellipsis (...) following it, and a dialog box opens. This task looks at the grouping of the various menus to help you understand the functionality associated with each one.

1. The Photoshop File Menu

You use the Photoshop File menu to address the basic opening, closing, and saving of files. This menu covers the import/export of files, workflow management and automated tasks, as well as page setup and print options. It also contains the Exit command (Quit on the Mac) for closing the application. Note: Photoshop for Mac OS X features a Photoshop menu that includes the Preferences, Hide, and Quit commands.