



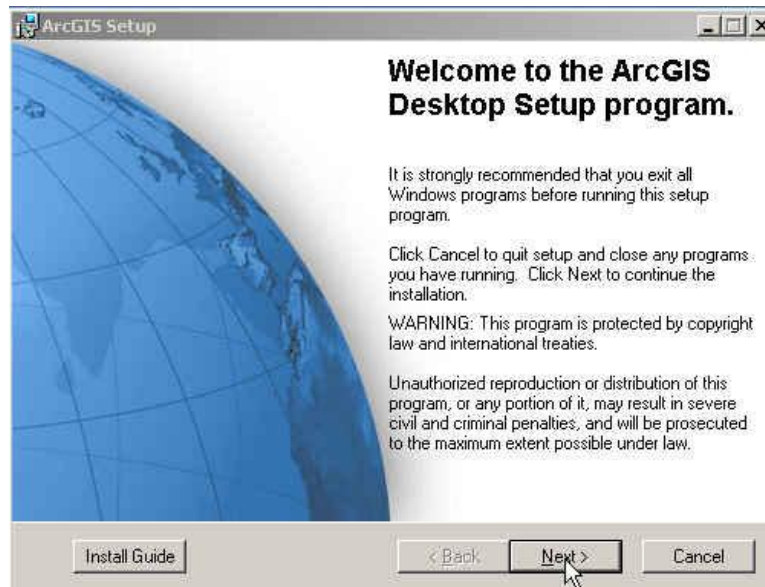
Install ArcGIS

LATIHAN 1 : INSTALL ARC GIS 9

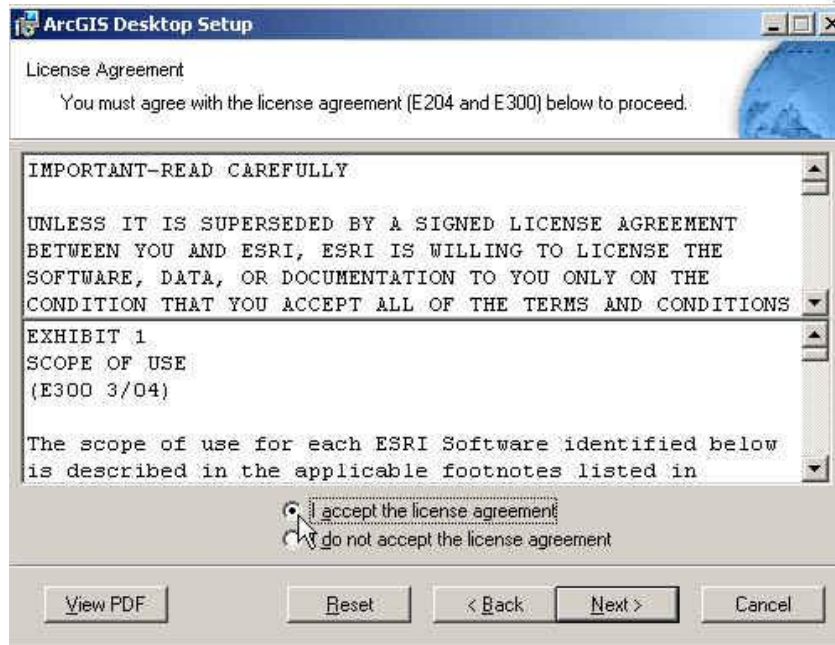
1. Masukkan CD ARC GIS 9, Jalan Auto Run
2. Klik Install ArcGIS DESKTOP



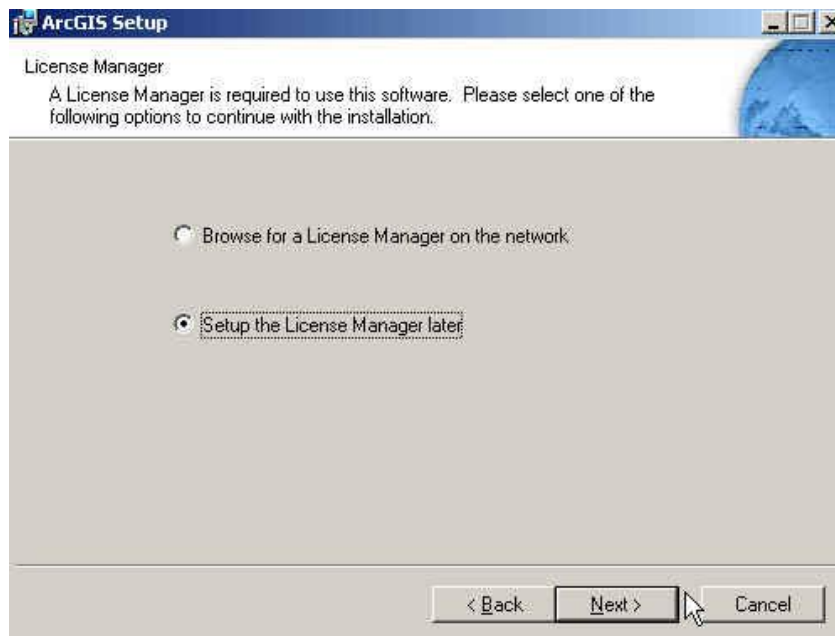
3. Klik NEXT untuk melanjutkan Install



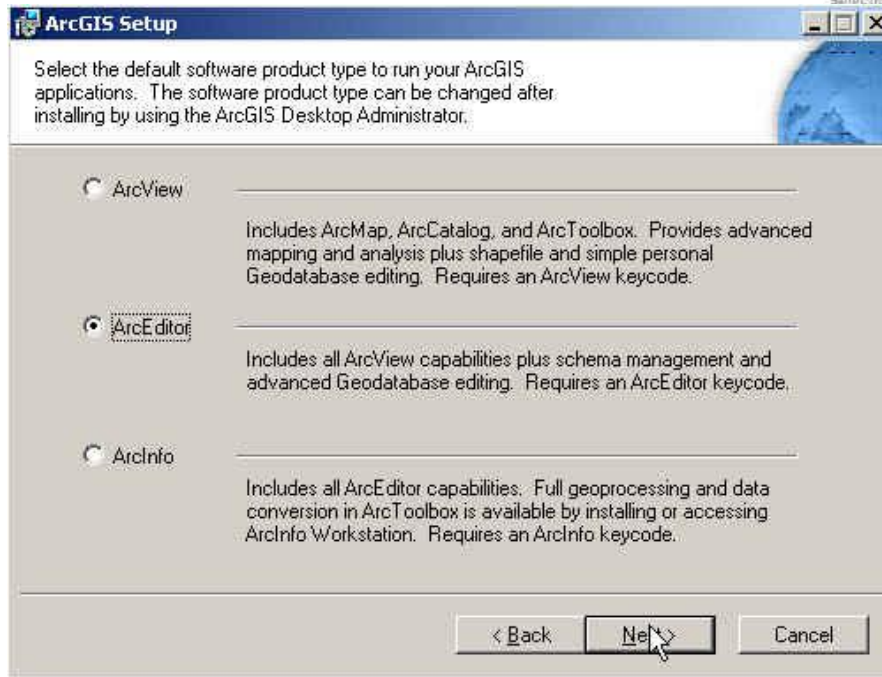
4. Chek I Accept the license agreement, Klik Next



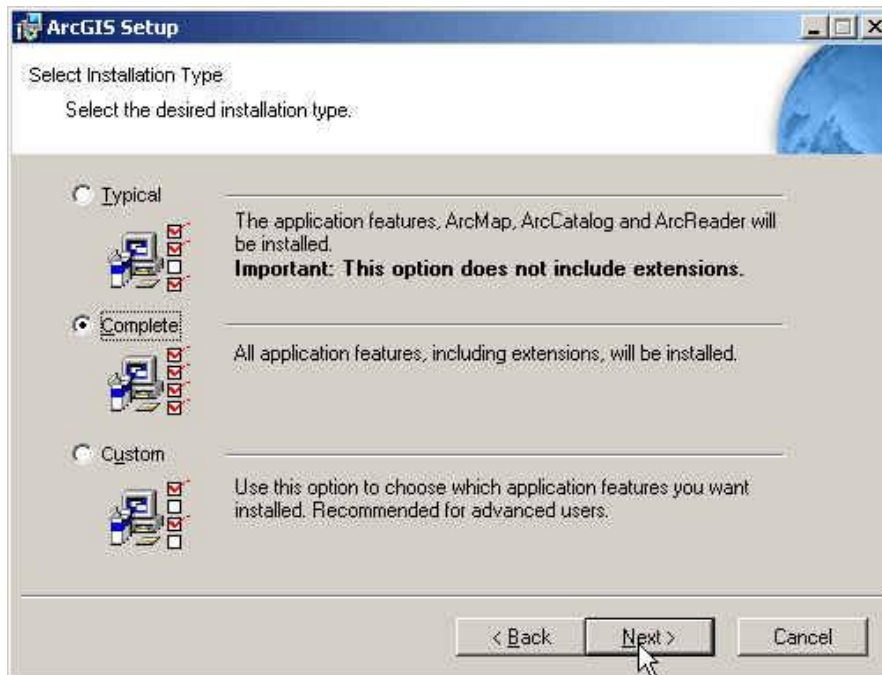
5. Chek Setup the License Manager later, klik Next



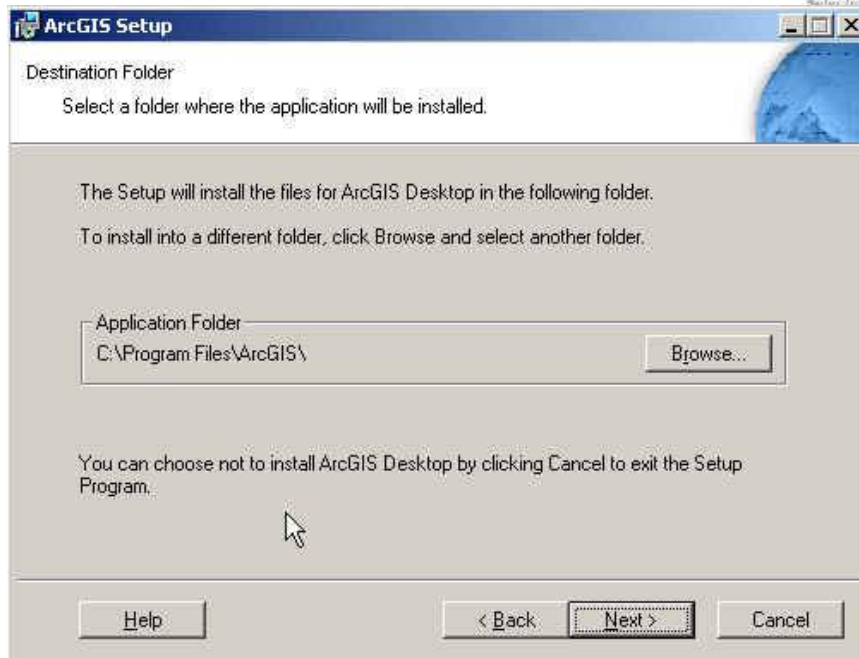
6. Chek ArcEditor, Klik Next



7. Chek Complete, klik NEXT



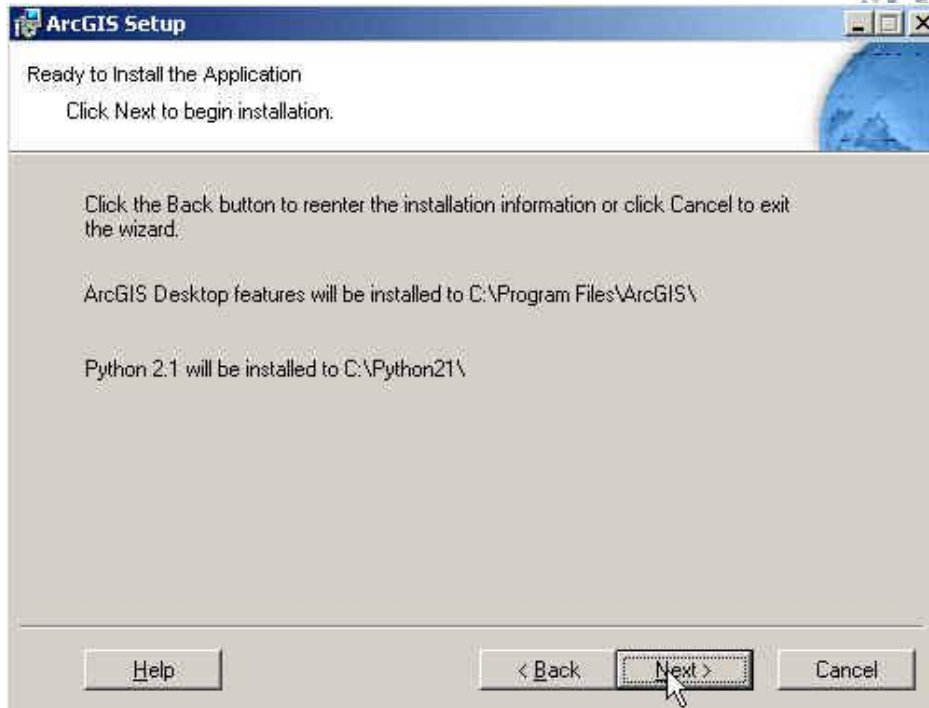
- Pilih directory install dengan Browse, Klik NEXT



- Klik NEXT



10. Klik NEXT



11. Klik Finish



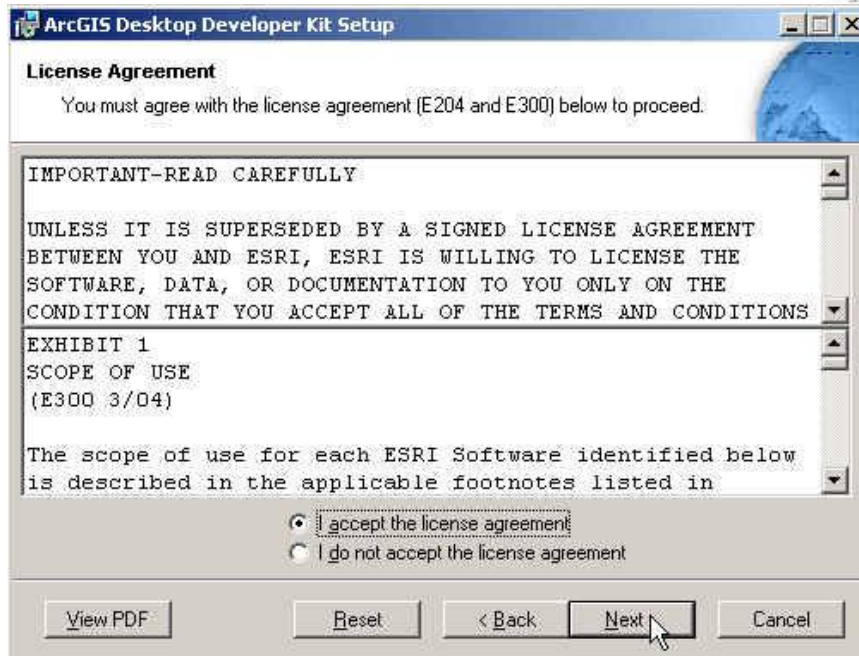
12. Berikutnya install ArcGIS Desktop Developer Kit, masukkan CD Installer ArcGIS Desktop Developer Kit, Klik OK



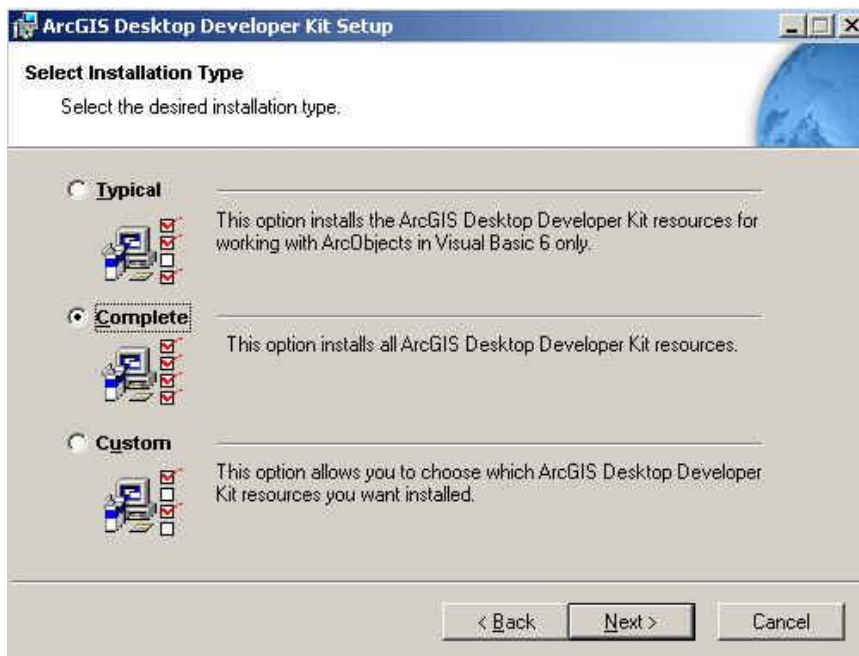
13. Klik NEXT



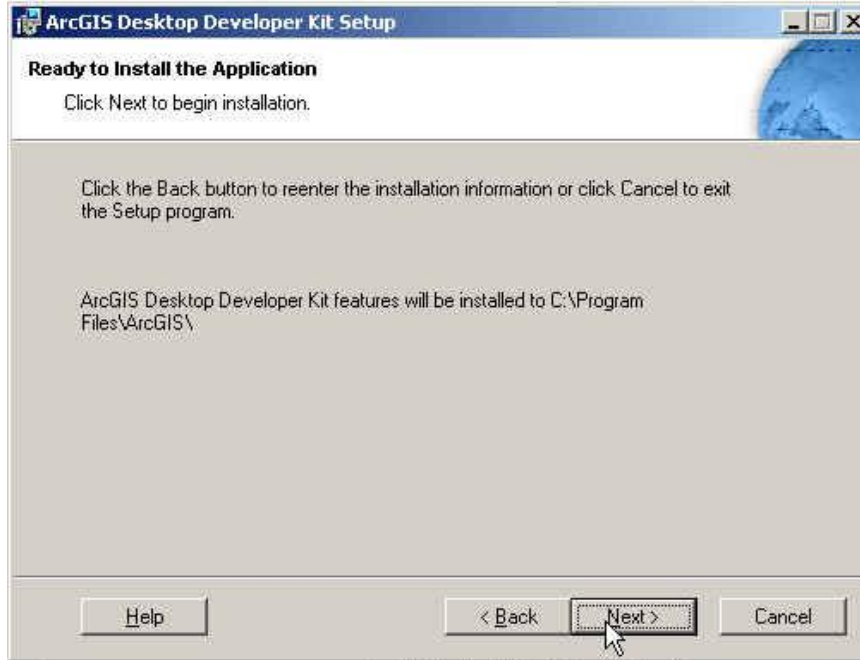
14. Chek I Accept the license agreement, Klik Next



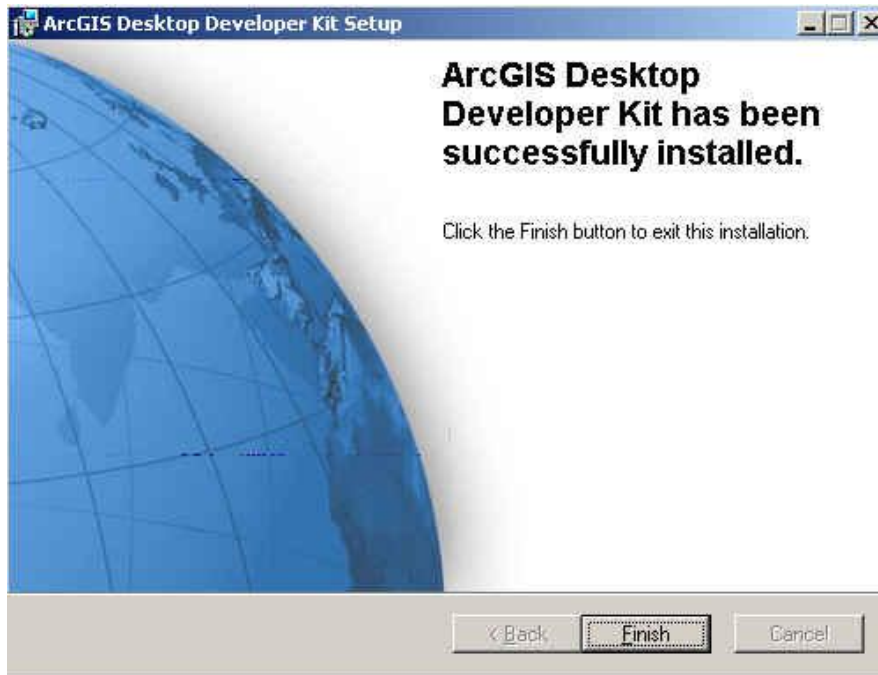
15. Chek Complete, Klik NEXT



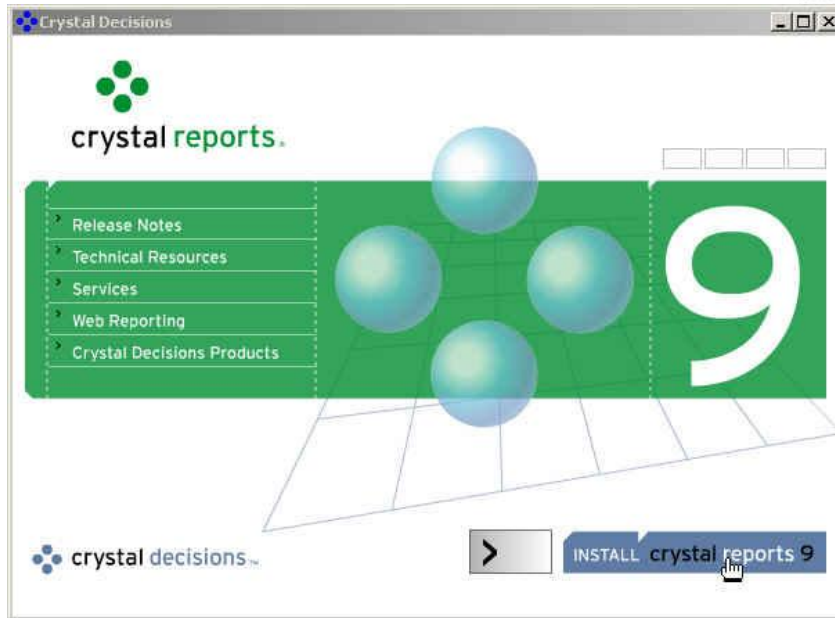
16. Klik NEXT



17. Klik Finish



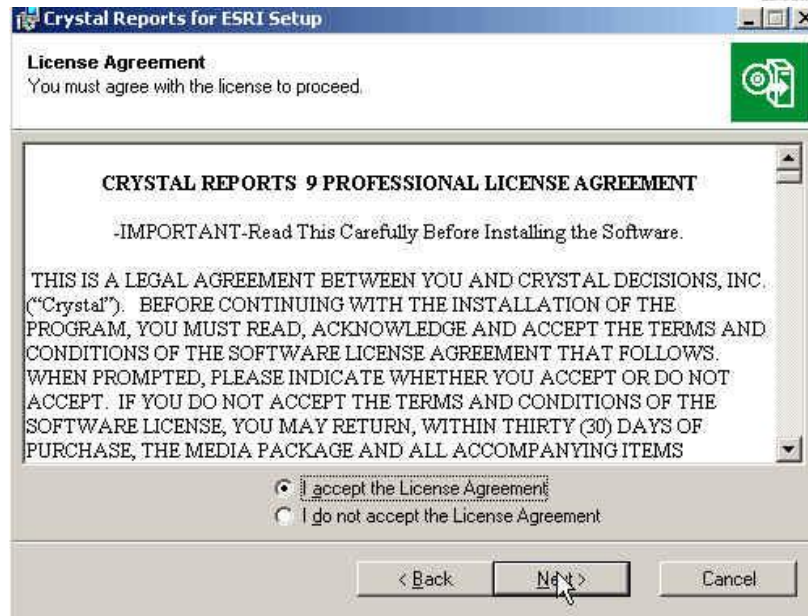
18. Selanjutnya Install Crsytal Report fo ESRI, Klik Install Crystal reports 9



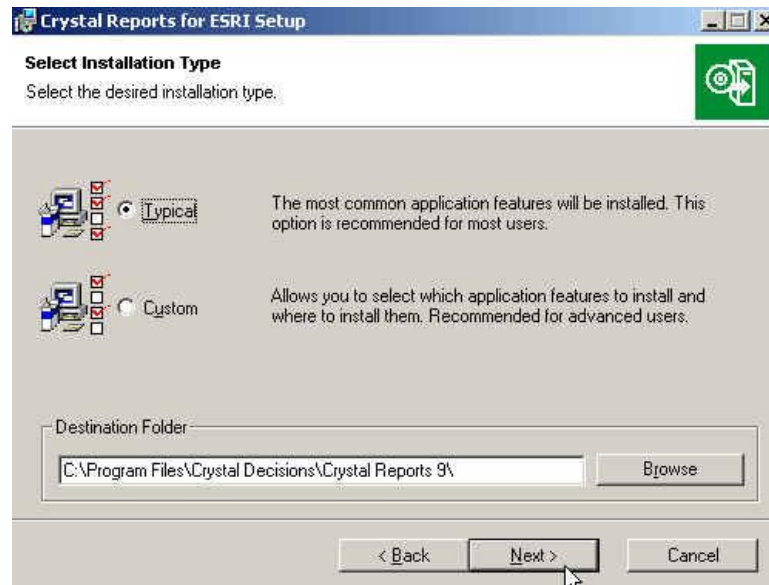
19. Klik Next



20. Chek I Accept the License Agreement, Klik NEXT



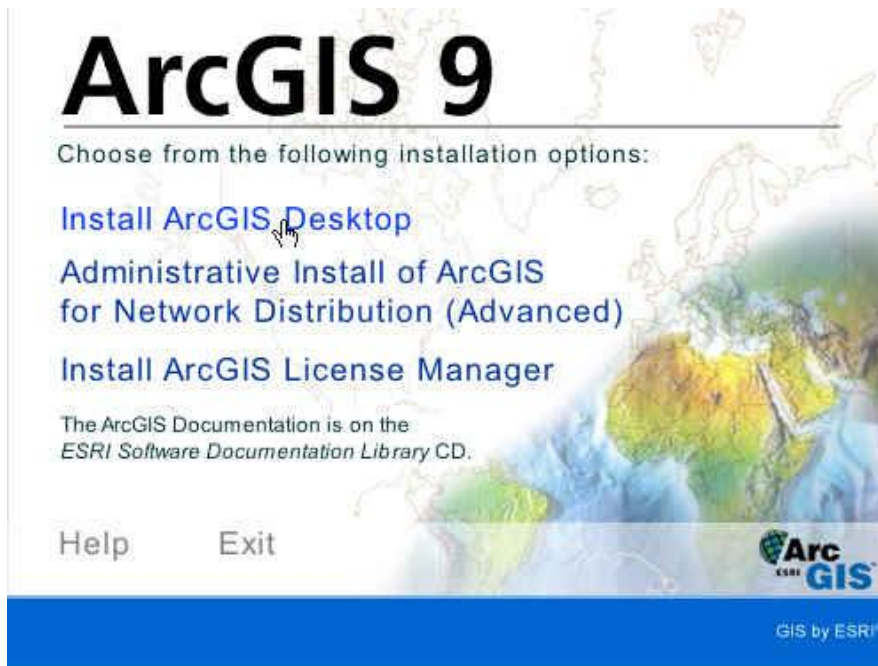
21. Chek Typical, Klik NEXT



22. Klik Finish



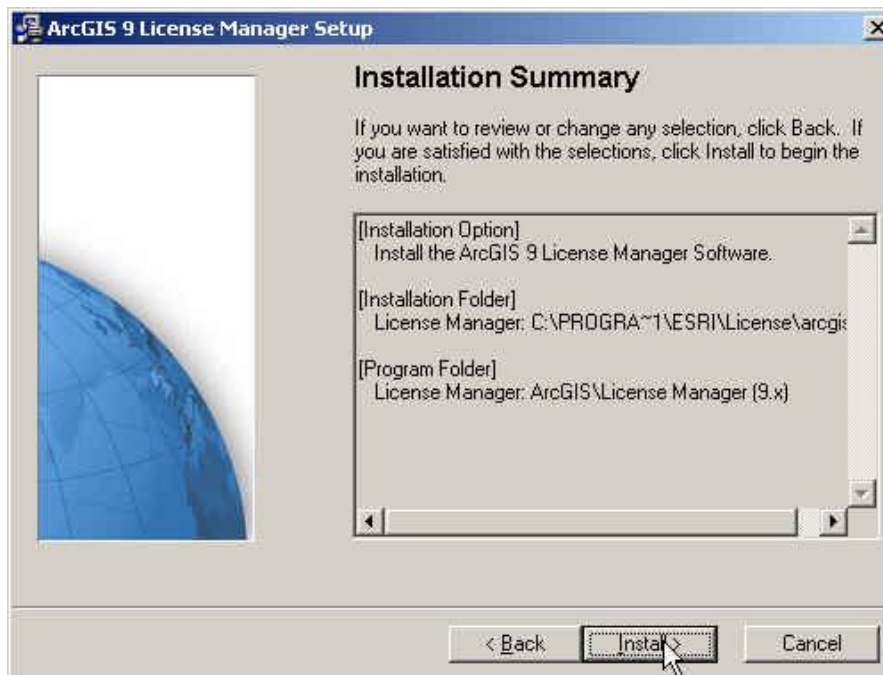
23. Yang terakhir Install ArcGIS License Manager, klik Install ArcGIS License Manager



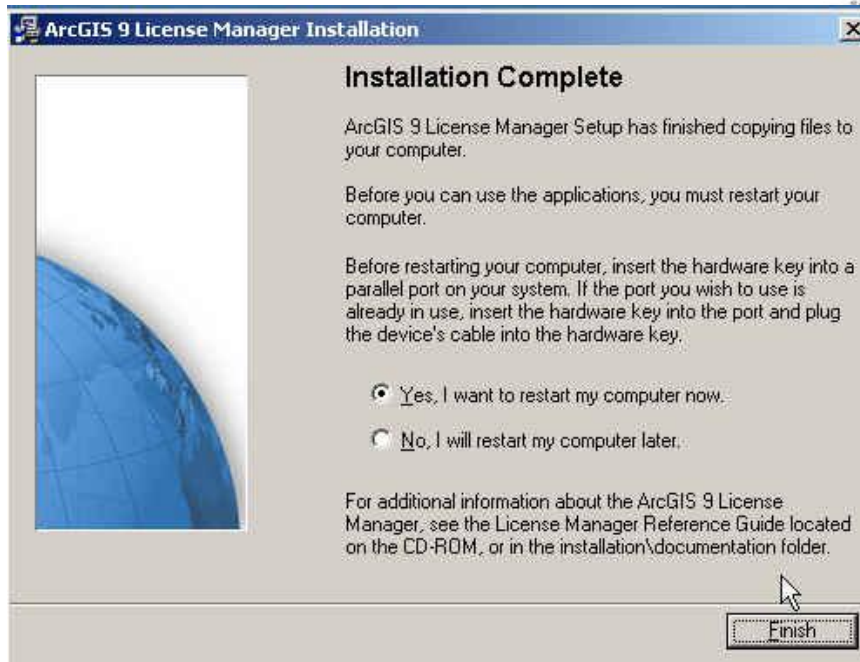
24. Chek I received the license file by email and have saved it to disk, kemudian cari file License dengan browse, Klik NEXT



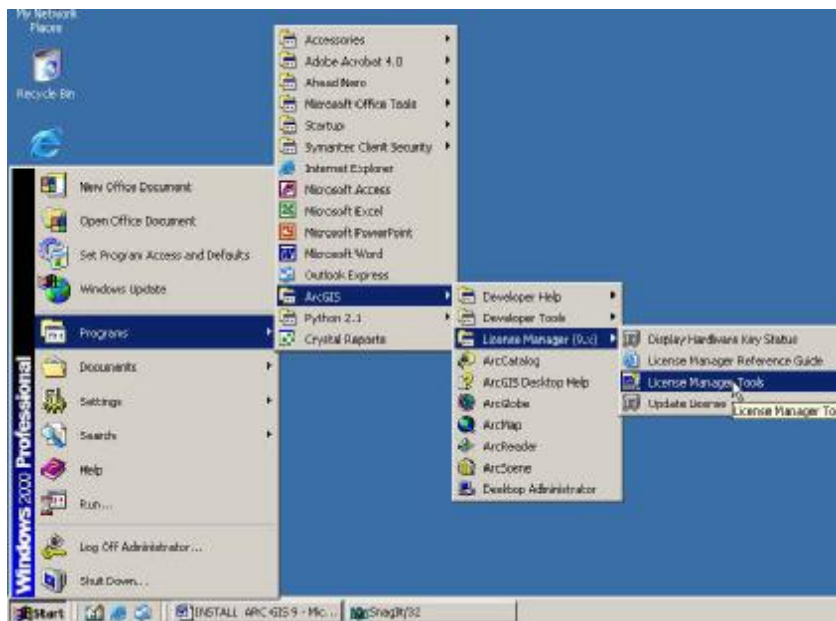
25. Klik Install



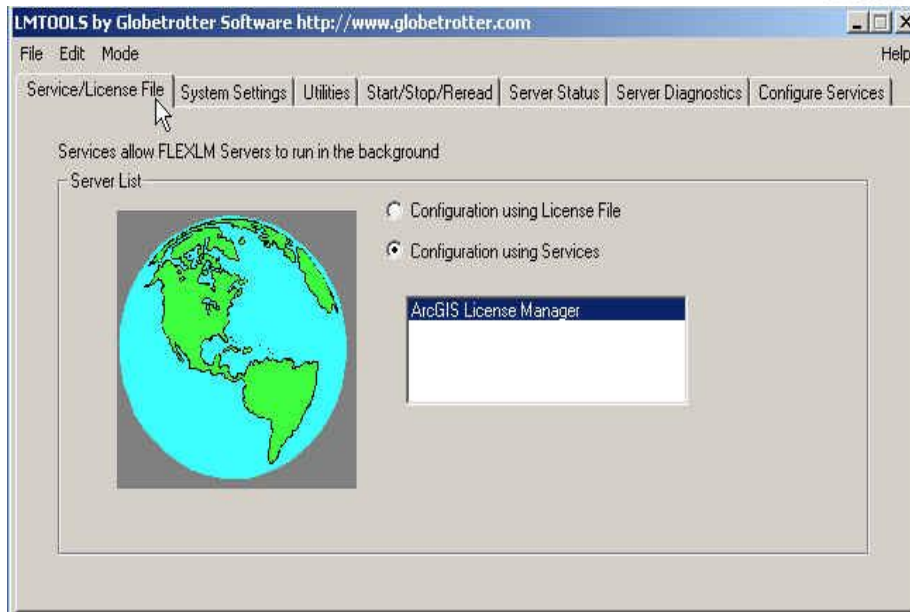
26. Chek Yes, I want to restart my computer now, klik finish



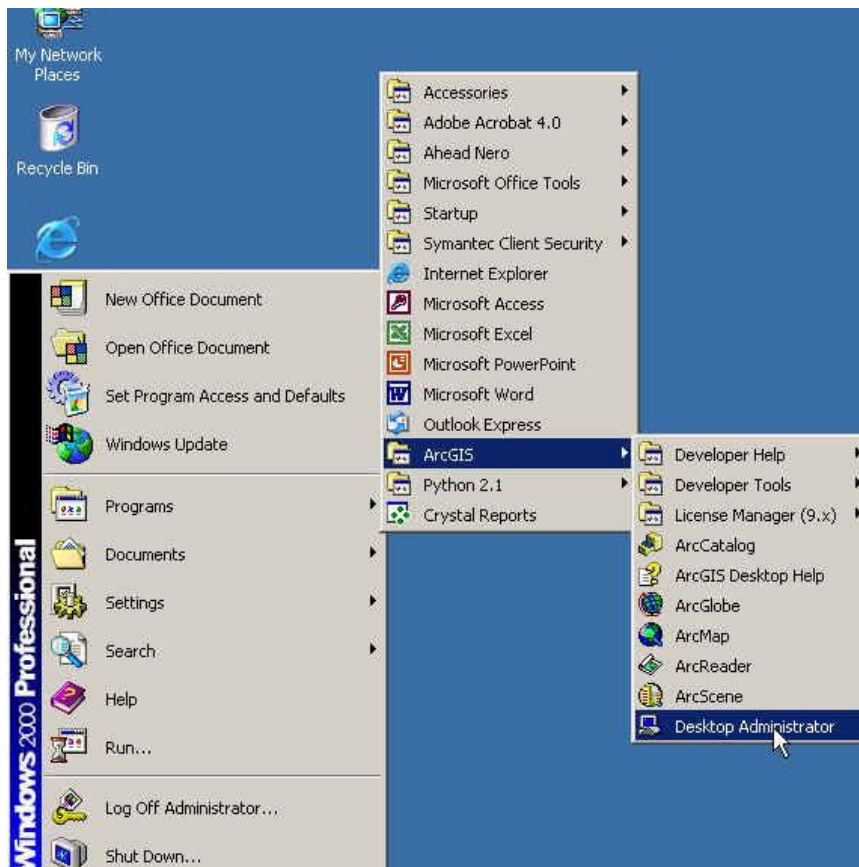
27. Setting Desktop Administrator untuk mengaktifkan Licensinya



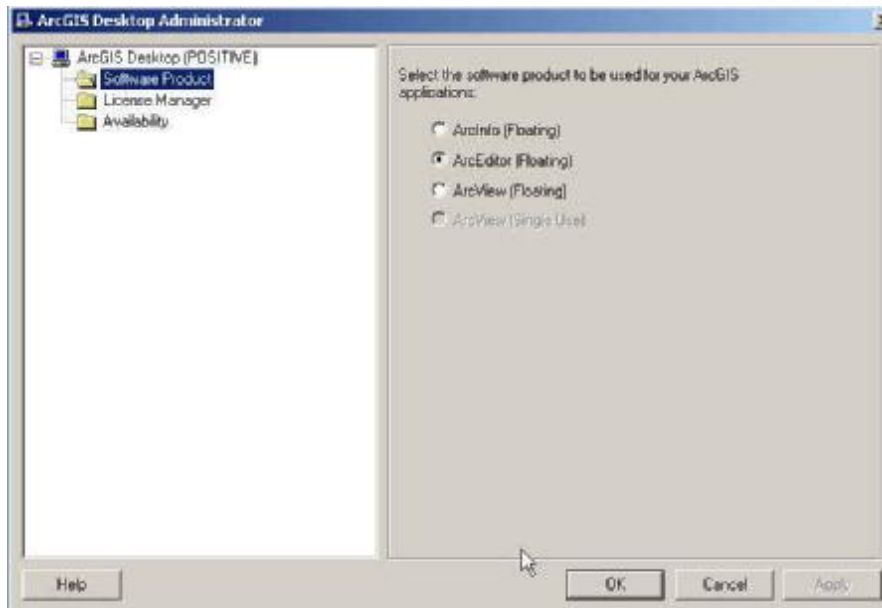
28. Chek Configuration Using Service



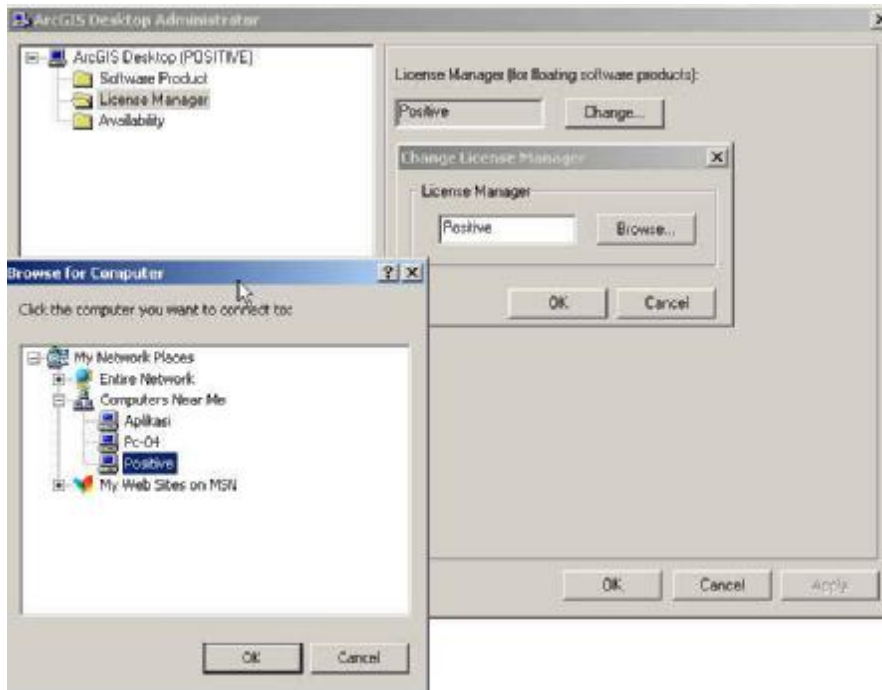
29. Setting Desktop Administrator



30. Klik Folder Software product, Chek ArcEditor (Floating)



31. Klik Folder License Manager, Klik Change, Klik Browse , cari computer server, klik OK



Dengan demikian Software ArcGIS 9 sudah dapat digunakan.